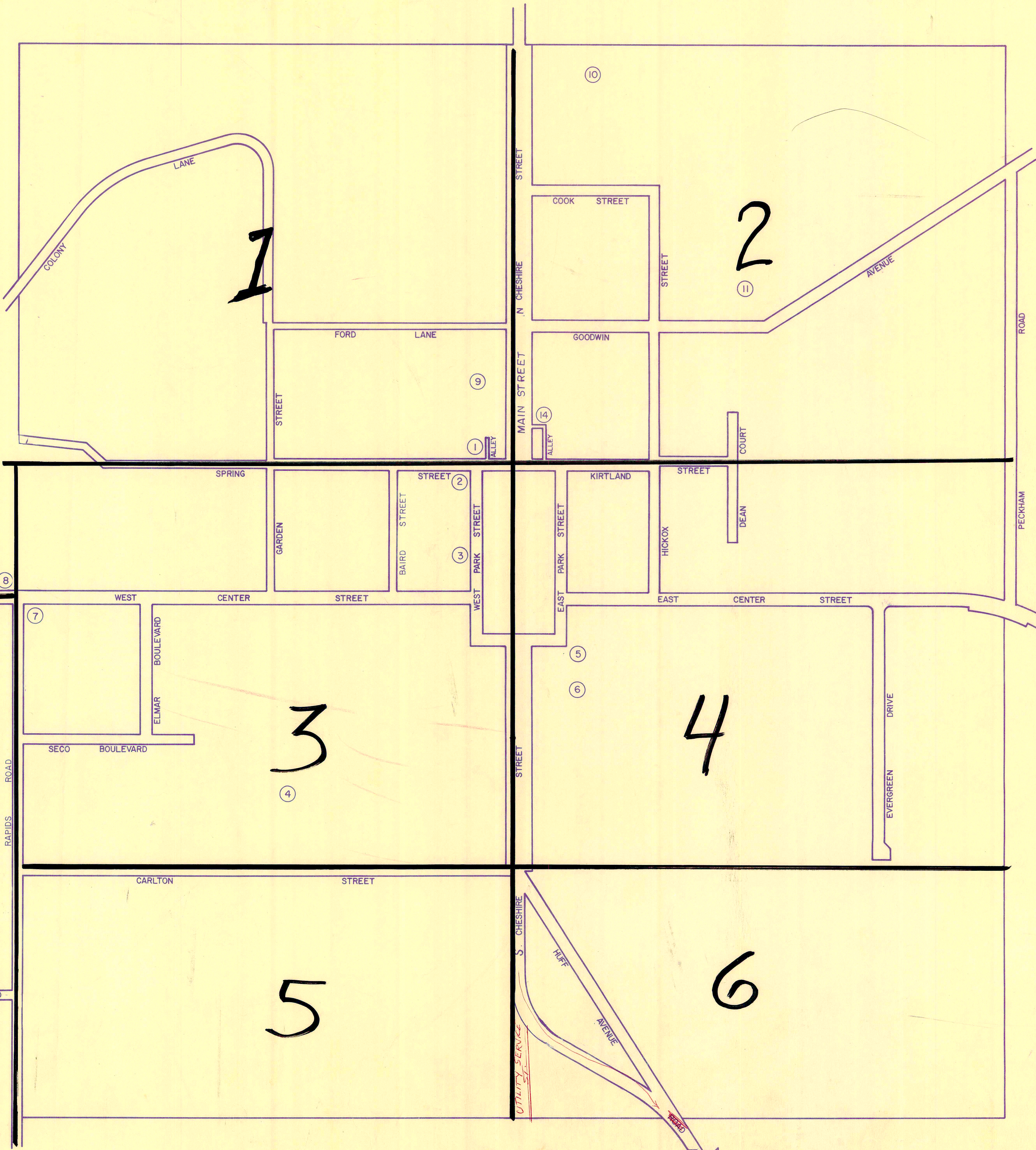


MAP OF BURTON VILLAGE



SCALE 1"=300'
0 100 200 300

- POINTS OF INTEREST
- ① BURTON VOL. FIRE DEPT.
 - ② BURTON CONG. CHURCH
 - ③ BURTON PUBLIC LIBRARY
 - ④ BURTON ELEM. SCHOOL
 - ⑤ GEAUGA HISTORICAL SOCIETY
 - ⑥ FIRST LUTHERN CHURCH
 - ⑦ STATE HIGHWAY DEPT.
 - ⑧ CHRISTIAN SCIENCE CHURCH
 - ⑨ BERKSHIRE HIGH SCHOOL
 - ⑩ GEAUGA COUNTY FAIRGROUNDS
 - ⑪ BURTON CEMETARY
 - ⑫ LOWER CEMETARY
 - ⑬ VILLAGE SEWAGE TREATMENT PLANT
 - ⑭ UNITED STATES POST OFFICE



7

1

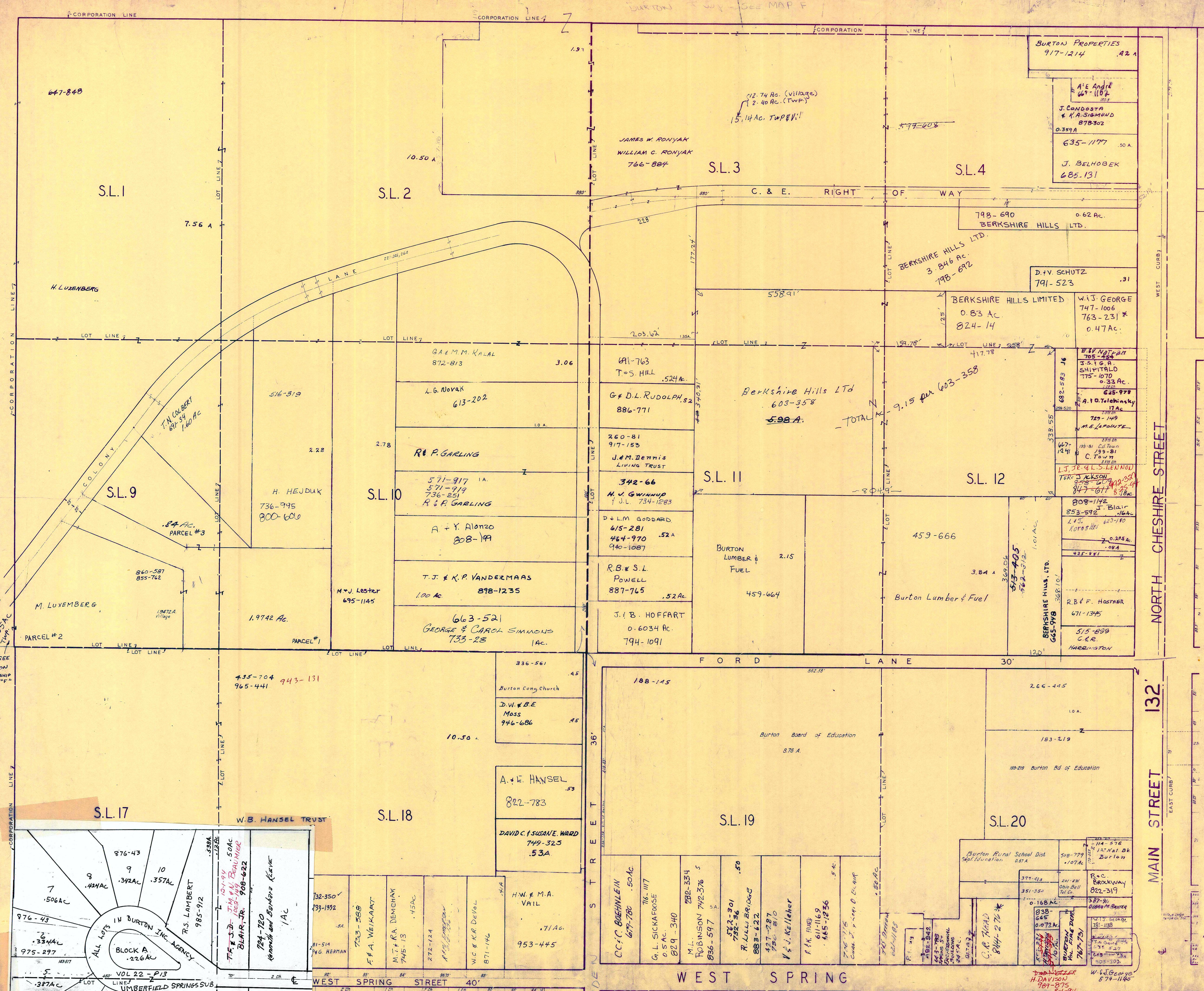
2

3

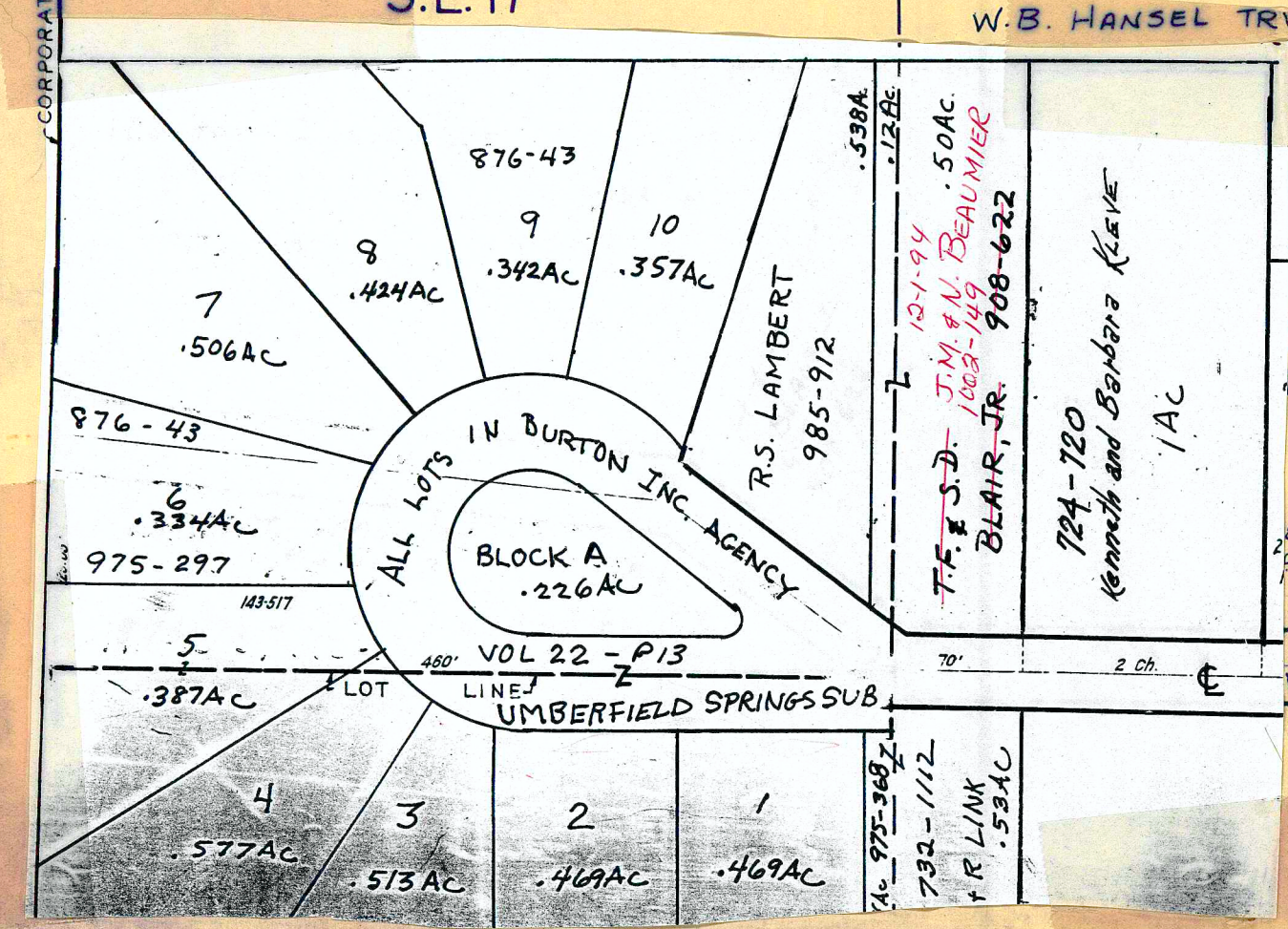
4

5

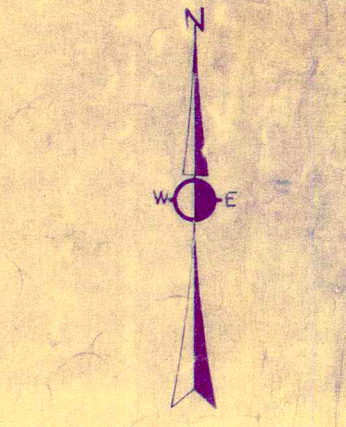
6



NOTE: SEE BURTON TOWNSHIP MAP 'F'



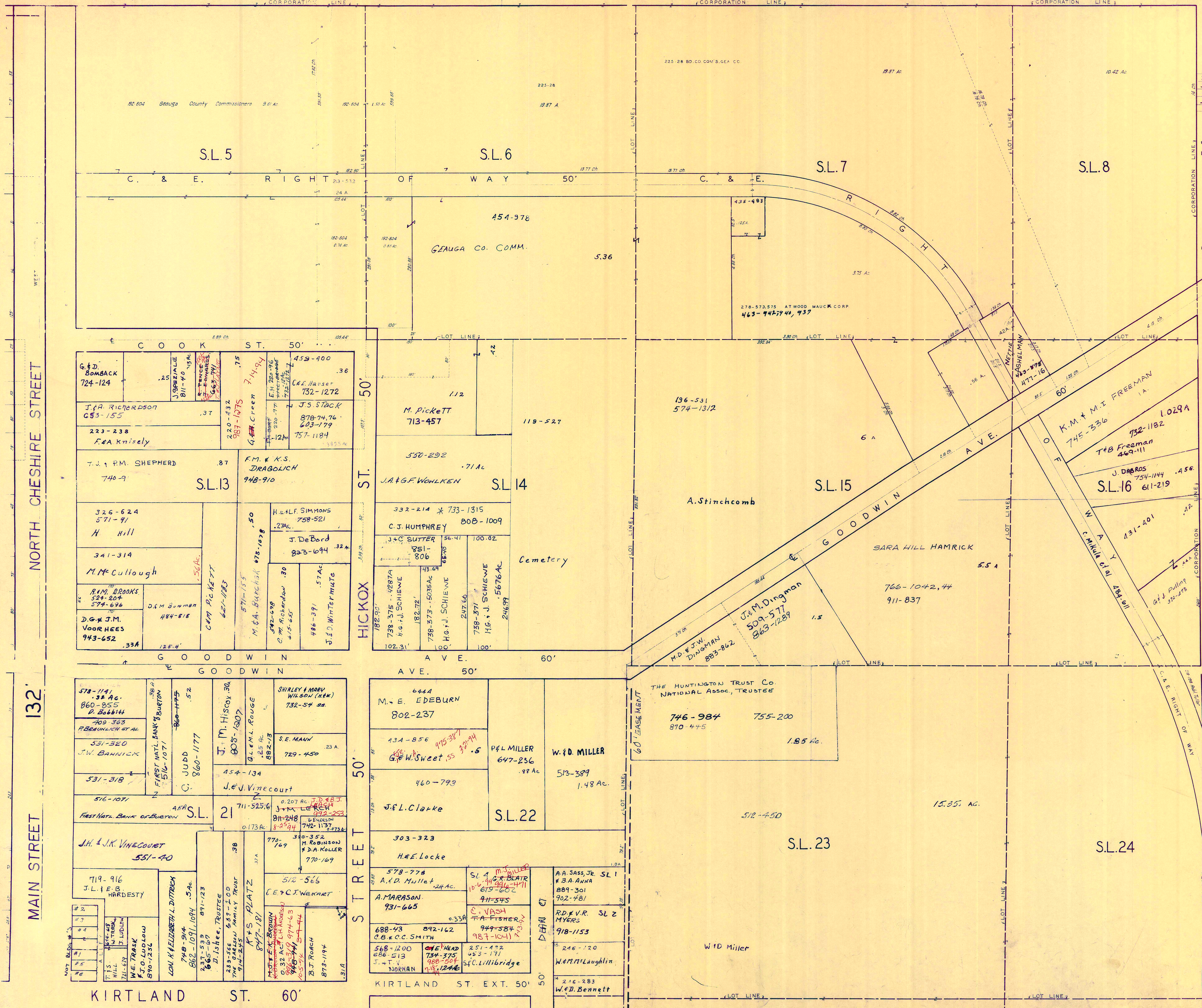
MAIN STREET 132'



SCALE: 1" = 100'

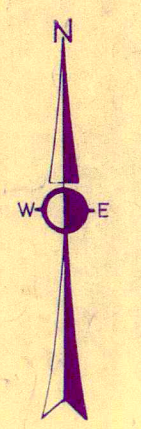
JAN. 1, 1994

RELATIVE REPRESENTATION



- 1. J. VINECOURT 786-883, 568-513
- 2. G. W. WALKER 582-978
- 3. R. M. WALKER 941-927
- 4. VILL LODGE TRUST CO. 316-157
- 5. H. O. HILL 771-4233-1032
- 6. T. M. & S. L. HILL 802-271

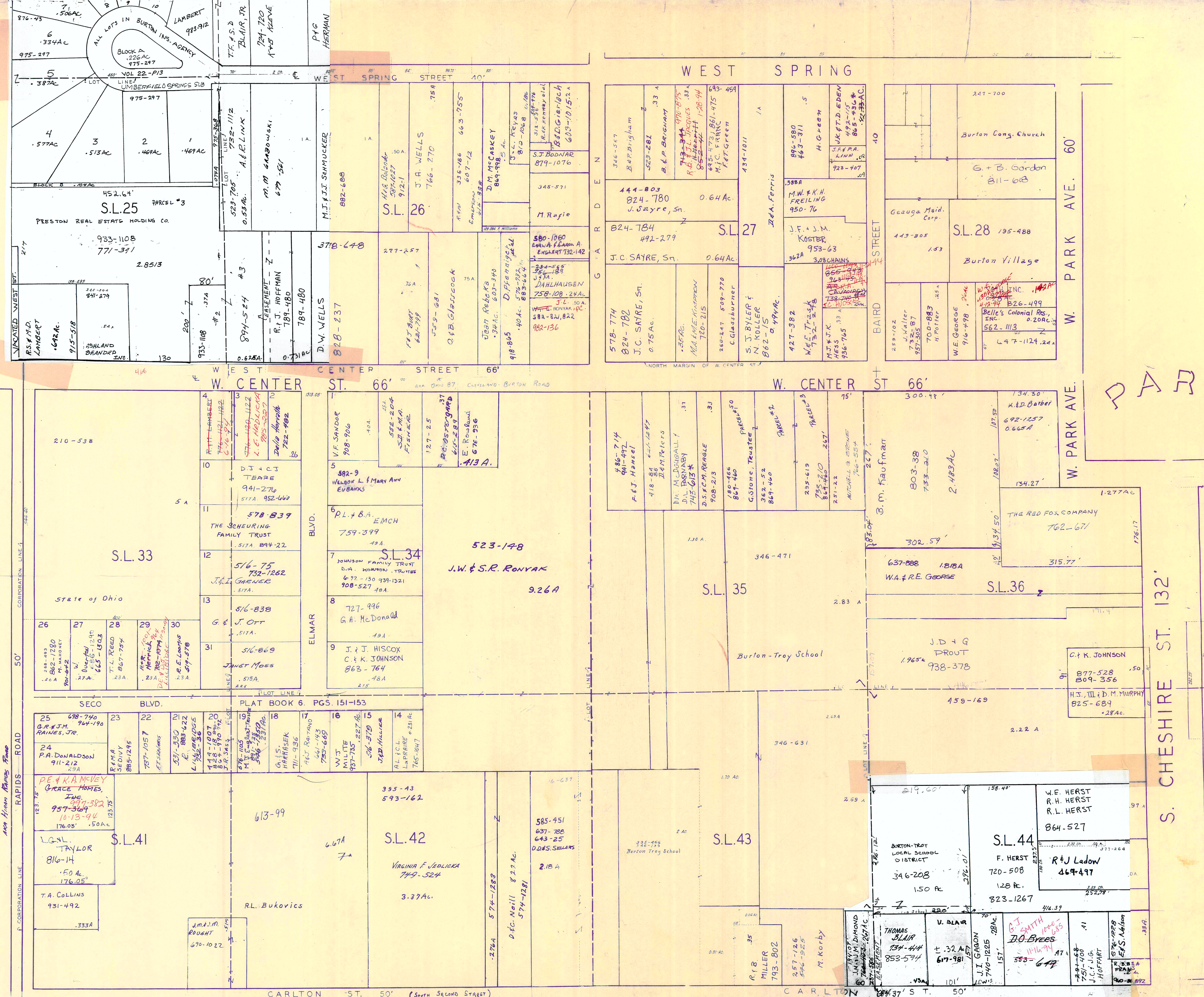
- BUILDING #
- 1. T. M. & S. L. HILL 802-271
 - 2. H. O. & D. E. HILL 553-1052
 - 3. J. VINECOURT 568-513 786-883
 - 4. VILL LODGE TRUST CO. 316-157
 - 5. G. W. WALKER JR. 582-978
 - 6. R. M. WALKER 941-927



SCALE 1" = 100'

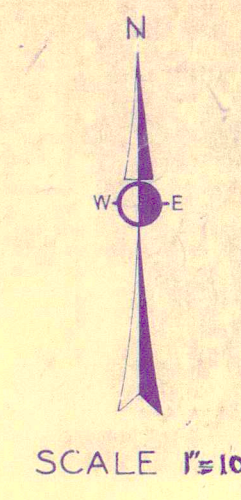
JAN. 1, 1994

RELATIVE REPRESENTATION



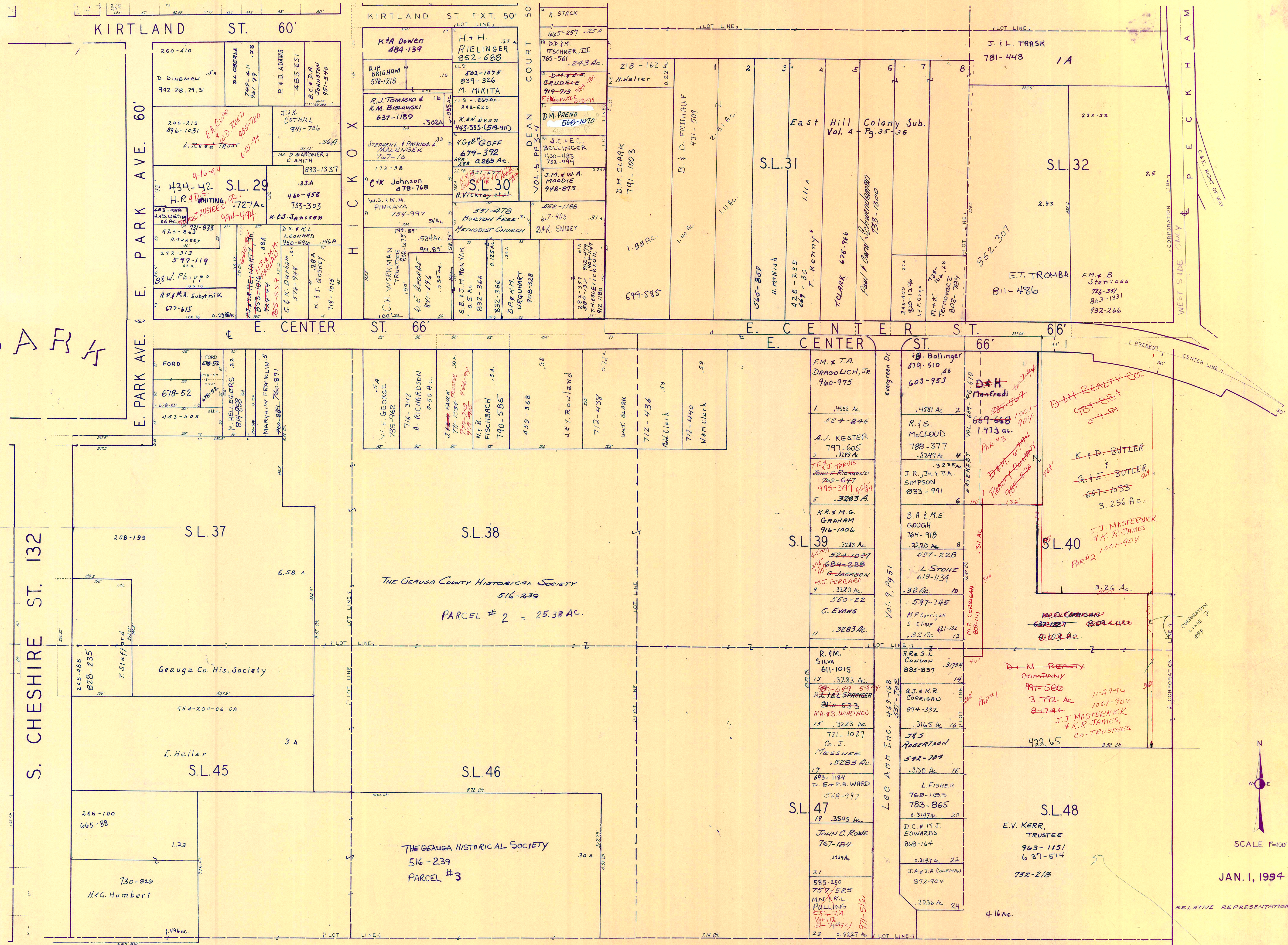
PARK

S. CHESHIRE ST. 132'



JAN. 1, 1994

PARK



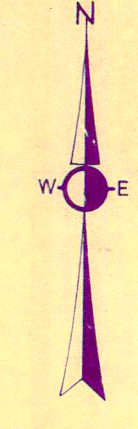
S. CHESHIRE ST. 132

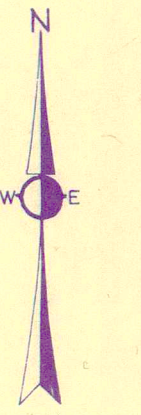
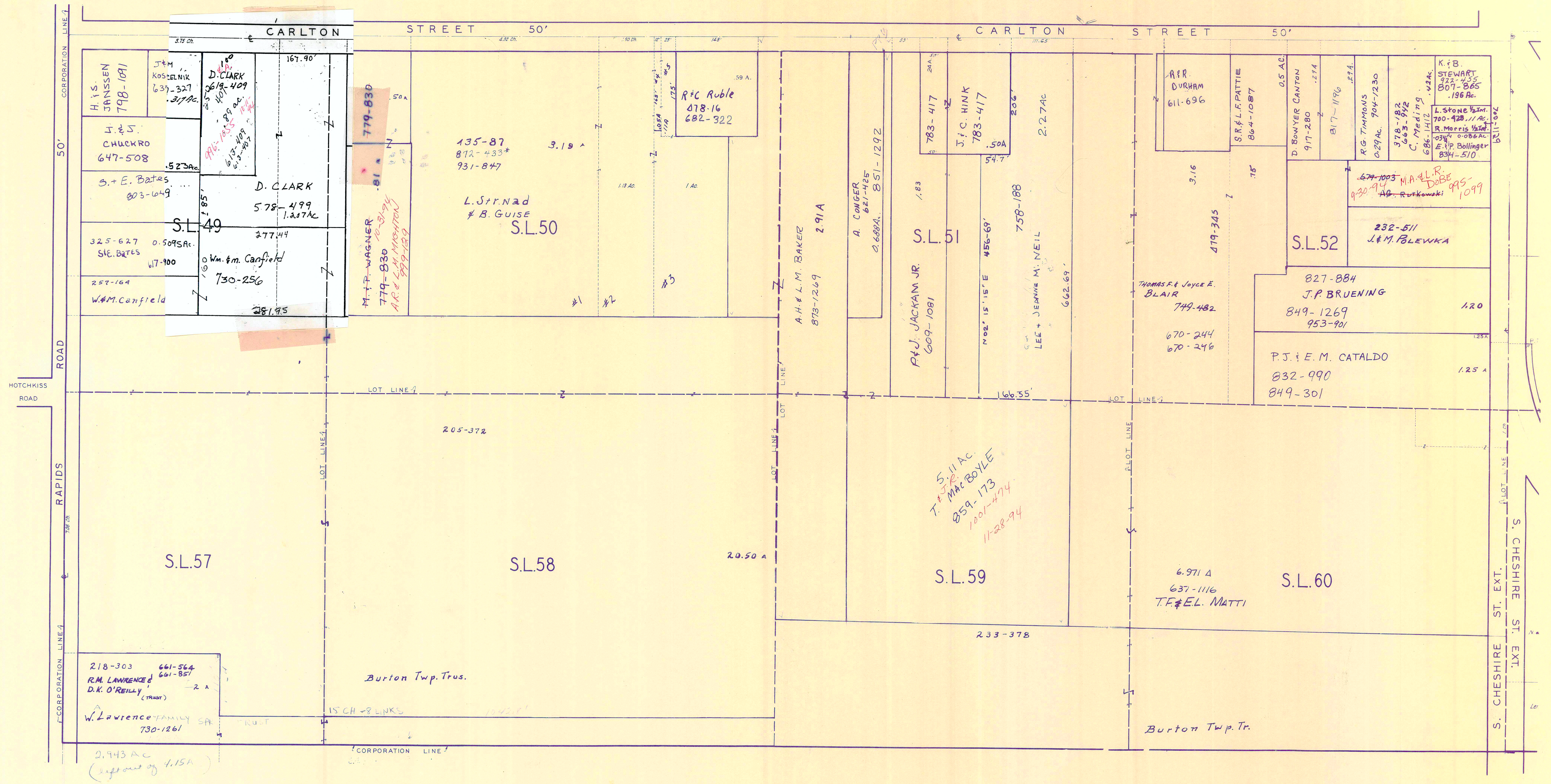
E. PARK AVE. 60'

KIRTLAND ST. 60'

E. CENTER ST. 66'

E. CENTER ST. 66'

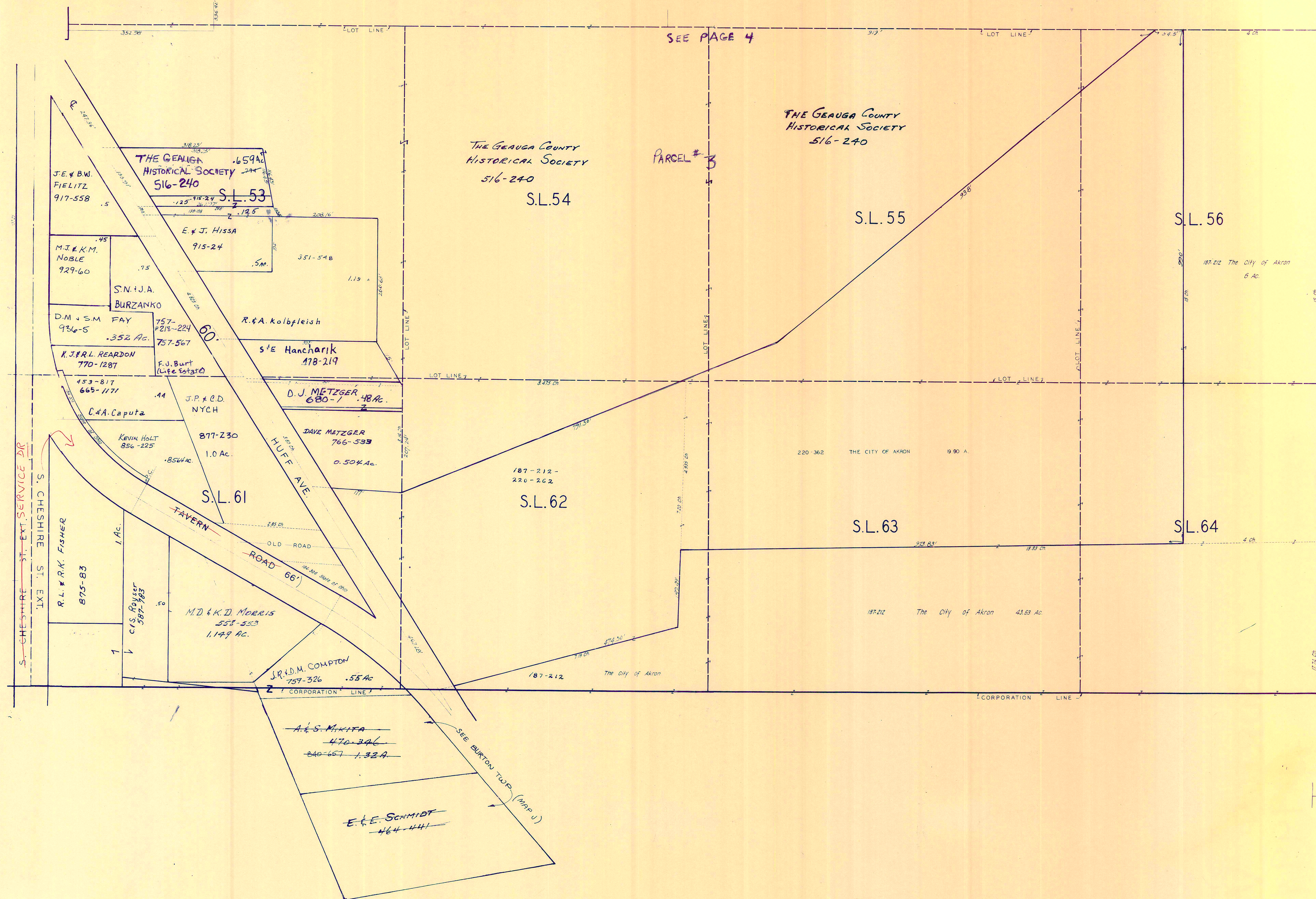




SCALE 1"=100'

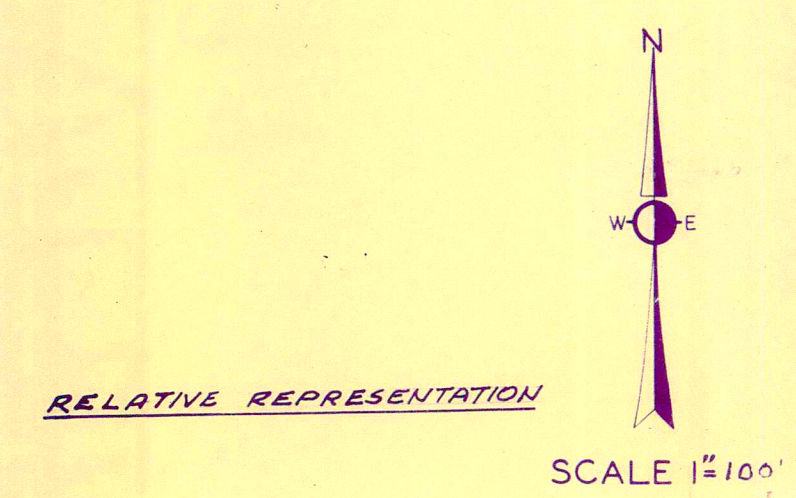
JAN. 1, 1994

RELATIVE REPRESENTATION



SEE PAGE 4

PARCEL # 3



JAN. 1, 1994

WEST CENTER STREET 66'

D.S. LITTLE &
E.R. BOGIELSKI
738-16

2 Ac.

2 Ac.
550-640

P.A.
BOLLINGER
881-314#
0.33 Ac.

D.S. LITTLE &
E.R. BOGIELSKI
738-224

M.J. & M.S. MEKOTA
827-1176

1.67 Ac.

J.A. & D. BAUMGARTNER
763-158

0.87 Ac.

D. & K. NIMIETZ
633-915

0.864 Ac.

G.L. & D.L. GREEN
957-323

1.212 Ac.

CORP. LINE

1.52 Ac.
E. CHITTLE
778-1126

2-16-94
B. SMERGLIA
782-427
1.571 Ac.
972-145
A. Rossi SMERGLIA, SS

556-341
E. CHITTLE
778-1126

0.78

R.C. AYERS
850-613

0.51 Ac.

44

E. CHITTLE
479-306
778-1123
9.31 Ac.

BIGELOW (MILL) ROAD

778-1123

T. & N. HERRICK
0.75 Ac.
663-139

D.J. & D. CHERNI
824-549

0.67 Ac.

CORP. LINE
HOTCHKISS ROAD 60'

HOTCHKISS ROAD

50'
ROAD
RAPIDS

BURTON
Village
100
SCALE 1"=100'
JAN 1994
RELATIVE REPRESENTATION

BURTON
VILLAGE
PAGE 7